

Cumberland Valley School District



MOUNTAIN VIEW MIDDLE SCHOOL & SITE WORK

CONSTRUCTION UPDATE

September 29, 2017



CRABTREE, ROHRBAUGH & ASSOCIATES
ARCHITECTS



Massaro
CONSTRUCTION MANAGEMENT SERVICES, LLC

Aerial Progress View

Mountain View
Middle School

Project Field Office

Relocated Bali Hai Road

Winding Creek
Elementary School

Elementary school
parking area



CRABTREE, ROHRBAUGH & ASSOCIATES
ARCHITECTS



Massaro
CONSTRUCTION MANAGEMENT SERVICES, LLC

Aerial Progress View of Roundabout

Mountain View Middle School

Right side of roundabout is complete; Left side transition is underway

Relocated Bali Hai Road



CRABTREE, ROHRBAUGH & ASSOCIATES
ARCHITECTS



Massaro
CONSTRUCTION MANAGEMENT SERVICES, LLC

Aerial Progress View of Roundabout



View of Roundabout from the Relocated Bali Hai Road



Close-up of Roundabout circle

Site Work



York Excavating placed concrete curb and subgrade elevations for the Middle School parking area.



CRABTREE, ROHRBAUGH & ASSOCIATES
ARCHITECTS



Massaro
CONSTRUCTION MANAGEMENT SERVICES, LLC

Site Work



Walking path installation from
Mountain View Middle School to the
pedestrian tunnel under Bali Hai Road



Foundations



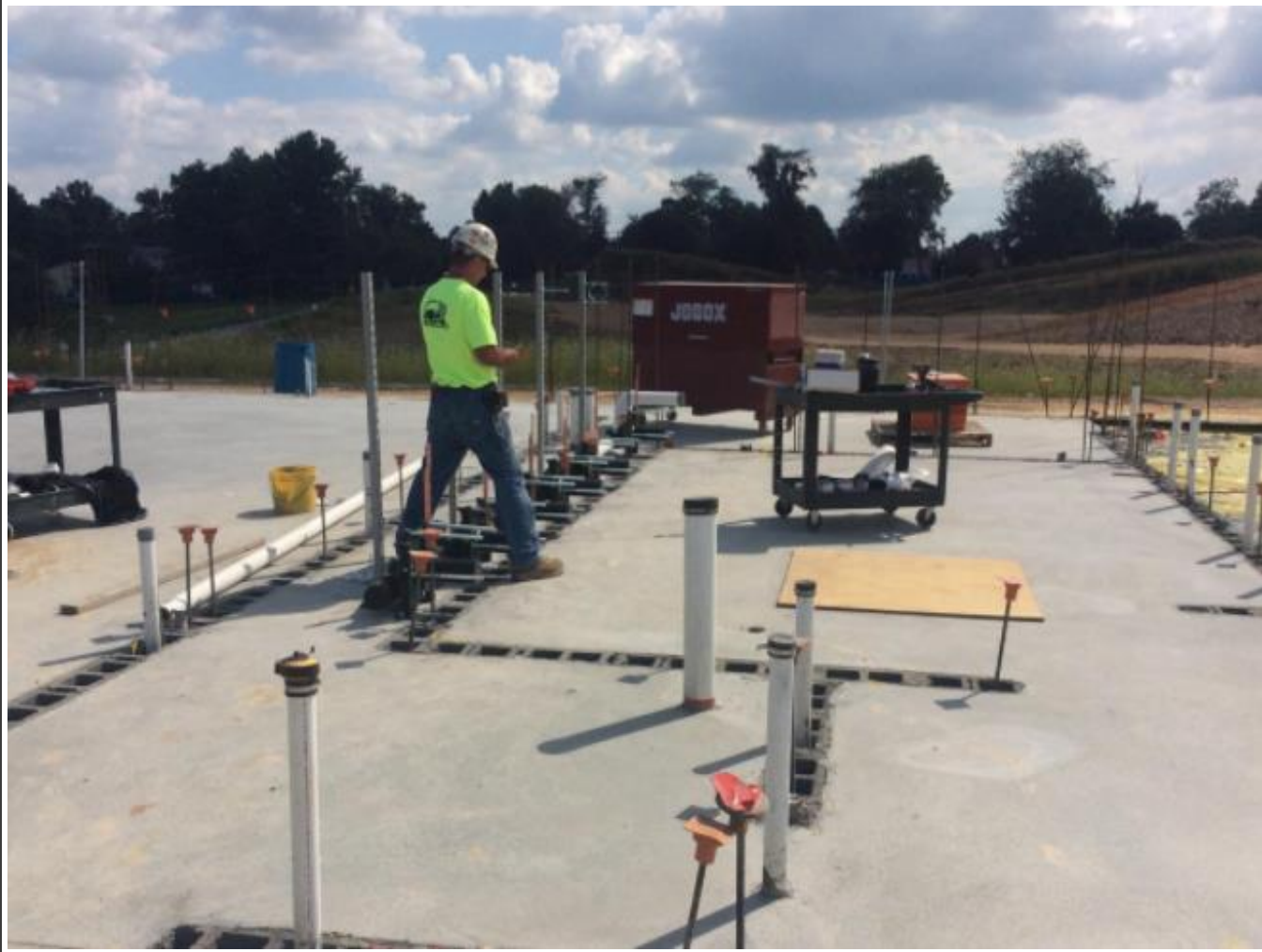
Footer excavation and reinforcement installation in Area D

Masonry



Area A – First floor masonry wall progress

Plumbing



Silvertip installing the water closet carriers in Area C

Concrete Slab on Grade



Lobar – Finishing slab placement for the West half of Area C

Aerial Progress View

Area C – Slab on grade complete

Areas A & B – Slabs poured and first floor masonry underway

Areas D & E – Footings are being excavated and poured



Two Week Look Ahead

- York Excavating – Continue placing stone base at parking area and prepare for asphalt paving
- Lobar – Continue 1st floor CMU walls in Areas A & B, start first floor block work in Area C; Complete Areas D & E foundations
- Silvertip – Continue plumbing rough-ins with ongoing block work Area A, continue plumbing rough-ins in Areas D & E
- Boro Electrical – Continue electrical conduit rough-ins with ongoing block work in Areas A& B, start under slab conduit rough-ins in Areas D & E
- Farfield – Start ductwork risers in Area A with ongoing block work

