

Cumberland Valley School District



MOUNTAIN VIEW MIDDLE SCHOOL & SITE WORK

CONSTRUCTION UPDATE

August 18, 2017

Site Work

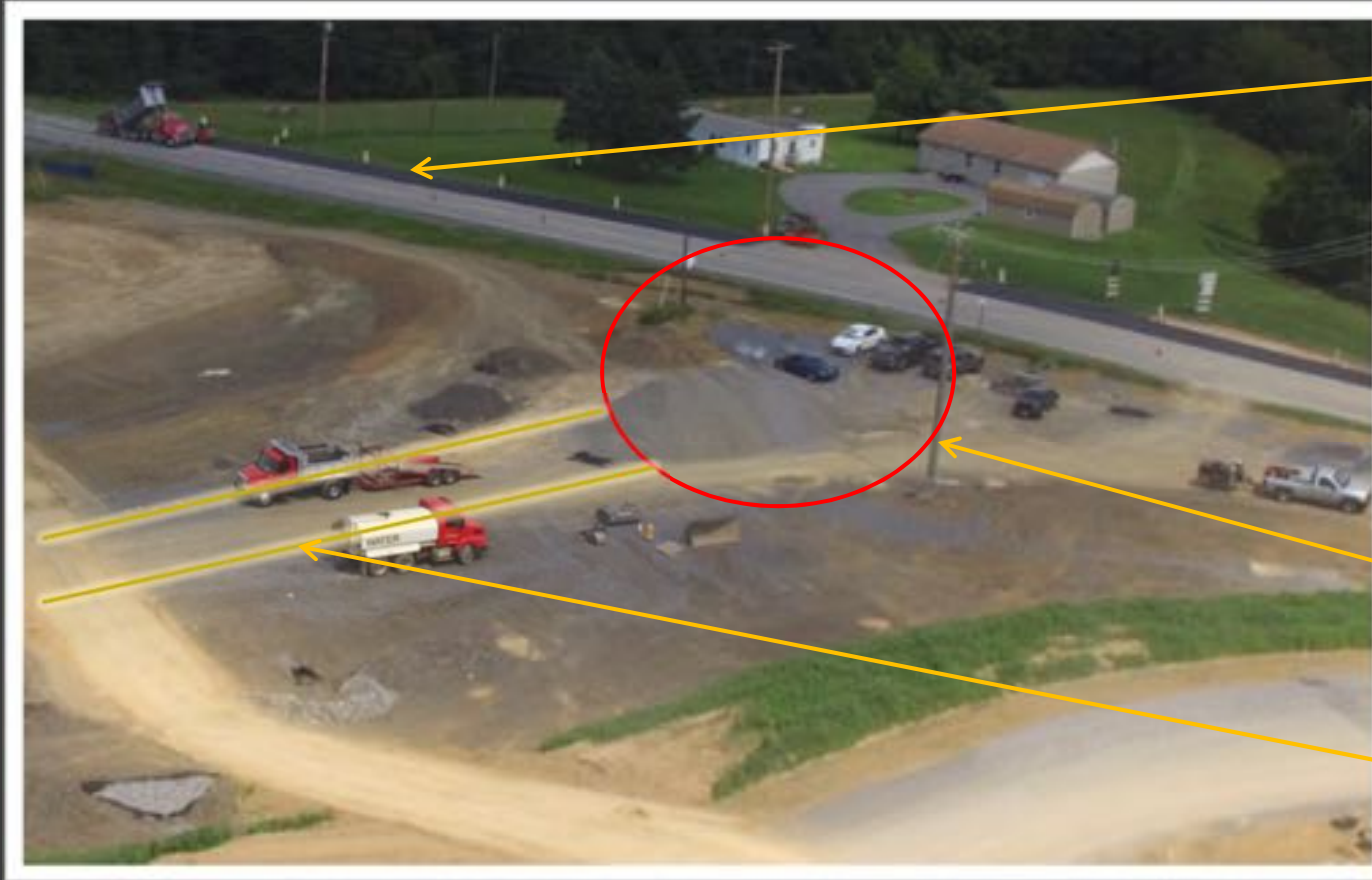


Verizon crew hanging their existing cables on temporary pole masts. Two poles are remaining for removal.

York Excavating continuing the removal of the original 24 inch water line. The roundabout grading will commence next.

Work continuing along Lambs Gap Road at the roundabout location.

Site Work



Temporary asphalt paving for the road widening and bypass lane

Approximate location of roundabout

Tie-in routing for new Bali Hai Road.

Roundabout preparation work at Lambs Gap Road.

Site Work



Electrical and tele-data conduit duct bank installation along Bali Hai Road – These are the interconnecting duct banks between the buildings

Middle School Area A – First Concrete Slab pour



CRABTREE, ROHRBAUGH & ASSOCIATES
ARCHITECTS



Massaro
CONSTRUCTION MANAGEMENT SERVICES, LLC

Middle School Areas B & C



Area B - Electrical under slab
conduit rough-in at corridor



Area C – Sanitary plumbing rough-ins

Mountain View Middle School – 8/18/17



Winding Creek Elementary School



View looking from the Middle School



CRABTREE, ROHRBAUGH & ASSOCIATES
ARCHITECTS



CUMBERLAND VALLEY
SCHOOL DISTRICT



Massaro
CONSTRUCTION MANAGEMENT SERVICES, LLC

Mountain View Middle School



Colocation Field Office

Middle School

New Bali Hai Road

View looking from the Elementary School

Two Week Look Ahead

- York Excavating – Continue grading for the roundabout, complete grading of Old Bali Hai Road; continue electrical site work
- Continue permanent seeding along the new Bali Hai Road
- Lobar – Continue first floor CMU walls in Area A
- Silvertip Inc. – Continue plumbing drain rough-ins with ongoing block work Areas B & C.
- Boro Electrical – Continue electrical conduit rough-ins with ongoing block work – Areas B & C.