

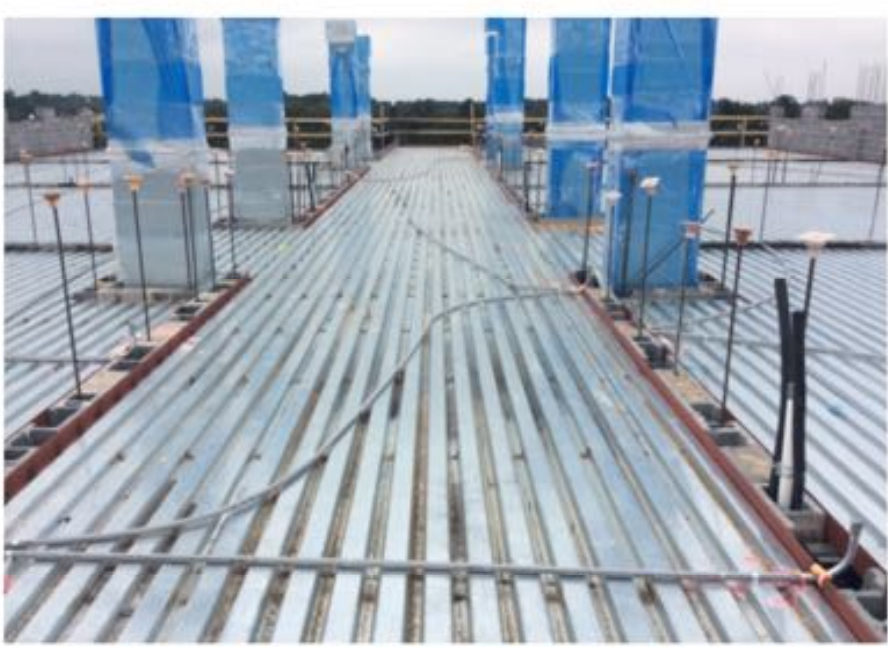
Cumberland Valley School District



WINDING CREEK ELEMENTARY SCHOOL **CONSTRUCTION UPDATE**

August 18, 2017

Building Area A



This photo shows the second floor metal deck installed, the electrical in slab conduits installed and the plumbing/HVAC duct passing vertically – All in preparation for the slab on deck concrete pour.



8/16/17 – First concrete slab on deck pour. The concrete is truck pumped up to the deck where the Lobar crew places and finishes it.



CRABTREE, ROHRBAUGH & ASSOCIATES
ARCHITECTS



CUMBERLAND VALLEY
SCHOOL DISTRICT



Massaro
CONSTRUCTION MANAGEMENT SERVICES, LLC

Progress in Area C Wing



This photo shows the continuation of the underground plumbing work in the main mechanical room. (Silvertip Inc.)



Installing the power & data floor boxes being set for the concrete slab on grade pour in Learning Commons A127 (Boro Construction)

Area C - Start of Exterior Wall Finishes



The first step for the installation of the exterior face brick is to create the waterproof barrier on the concrete block . This photo shows the progress of the spray on barrier

Area C – Start of Exterior Face Brick



These photos shows the masonry crew stocking the Hydrolift platform with the face brick and exterior insulation board.



CRABTREE, ROHRBAUGH & ASSOCIATES
ARCHITECTS



CUMBERLAND VALLEY
SCHOOL DISTRICT



Massaro
CONSTRUCTION MANAGEMENT SERVICES, LLC

Area C – Start of Exterior Brick



Exterior concrete block

Spayed on vapor barrier

Exterior Dow board insulation

Exterior face brick



Typical exterior masonry wall profile

Winding Creek Elementary School – 8/18/17



CRABTREE, ROHRBAUGH & ASSOCIATES
ARCHITECTS



Massaro
CONSTRUCTION MANAGEMENT SERVICES, LLC

Two Week Look Ahead

- Lobar – Continue CMU block work in Area C; Pour second floor deck in Area B; Set second floor joists in Area C;
- Lobar – Continue Area C/Gym – Continue exterior spray on vapor barrier and face brick installation
- Silvertip – Continue under slab sanitary and storm piping in Area C for main mechanical room and Loading Dock ; wall rough-ins with block in Area C.
- Boro Electric – Interior wall rough-in's in Area C; Continue underground feeder conduit to Area C kitchen and main mechanical room; install slab on deck conduit in Area B.
- Farfield – Continue install of Area C & Gym - vertical shafts ductwork and pipe rough-ins with CMU install.
- York Excavating – Continue topsoil grading in subgrade mixing at West athletic fields – coordinate soil mixing with the District's turf contractor.